

# COCK 'O DOODLE – DOO

Issue 3, Volume 3

Presession April 2016

## 15 Sleeps 'til Footy & Netty Start!

You can smell it in the air – it's not far away!  
The farmers are burning off, the coolness of the air burns your lung, daylight savings had made it dark early and it just 'feels' like footy season!

First game is up against BBH at Clare. Mandy, Jacqui and the Social committee have organised the Car Park Auction upstairs at the conclusion of the A Grade – pencil it in now people – it's been a long time between drinks with you all!

Sleep well, stretch up, hydrate and be ready and rearing to go on the 23<sup>rd</sup>!

The **North Clare Football Club** is participating in the People's Choice Community Lottery – a unique fund raising opportunity for not-for-profit organisations like ours.

**Get in early to win!**  
Buy a ticket at [communitylottery.com.au](http://communitylottery.com.au) today!



**\$2**  
per ticket

Adrian Brien  
Hyundai  
EARLY BIRD PRIZE  
Hyundai Accent valued at \$18,296!  
Ticket must be purchased by 31 March 2016.

people's choice  
COMMUNITY LOTTERY

The Community Lottery is a **WIN-WIN** opportunity.

**WE** get to keep 100% of every ticket purchased on our behalf

**YOU** have a chance to win the Early Bird prize of a Hyundai Accent worth over \$18,000 by purchasing a ticket online before 31 March

**WE** have a chance to win \$1,000 worth of Harvey Norman gift vouchers if we sell the most tickets online before 31 March

**YOU** are also in the running to win one of 159 prizes for just a \$2 investment

Just click [www.peopleschoicecu.com.au/north-clare-football-club-inc](http://www.peopleschoicecu.com.au/north-clare-football-club-inc) on this link and it will take you directly to our unique fund raising page where you can purchase tickets.

**So get online now help us reach our fund raising goal!**

### CALENDAR

#### APRIL

- 9<sup>th</sup> NCFC Trial Game, Klemzig Reserve vs. Crystal Brook 12:30
- 17<sup>th</sup> NENA Coaching development course
- 21<sup>st</sup> NC Guernsey Presentation
- 23<sup>rd</sup> First game – NC v BBH @ Clare Presentations Upstairs, Car Park Auction
- 30<sup>th</sup> NC vs Min Man @ Mintaro. Presentations at the Sevenhill Pub

#### MAY

- 7<sup>th</sup> NC vs RSMU @ Clare
- 14<sup>th</sup> NC vs BS @ Snowtown
- 21<sup>st</sup> NC vs SC @ Clare
- 28<sup>th</sup> NC vs BSR @ Brinkworth



Any stories to share:  
[yarns18@hotmail.com](mailto:yarns18@hotmail.com)



Like us on Face Book

North Clare Football & Netball Club

[www.Northclarefc.com.au](http://www.Northclarefc.com.au)

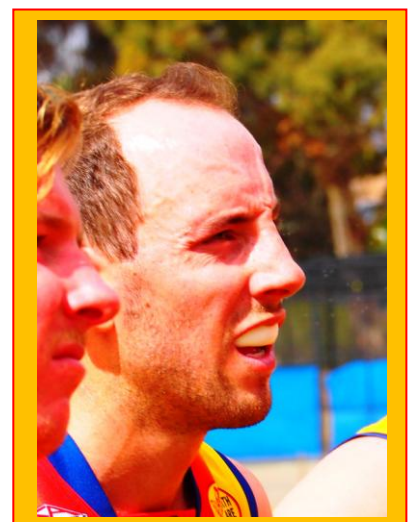
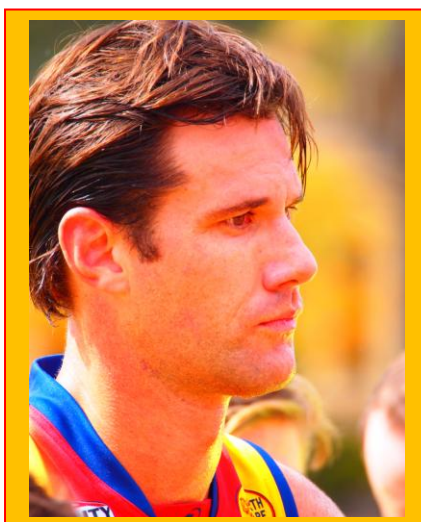




## Trial Game action 2.4.16 vs CY Cougars



## Hey ladies.... Some new ones!







## MULLIGHAN'S MEMO'S

Hi everyone

Welcome to the 2016 season. I am looking forward to a very successful year on the courts. Our pre-season in February was very well attended. Thanks to Diesy & Shaylee for taking the sessions. The trials followed suit with good numbers coming out. Getting the earlier start this season means our teams will be picked & settled and actually ready to go for the first game. A big welcome to our new girls too. Think they have settled in pretty well & welcome back to a few who weren't with us last season.

Big thank you's to the ladies who have taken on positions within the Club, and especially to Sonya Baum, Yana Zanette, Mel Treloar, Renee Scott, Julie Lewcock & Josie Paine for stepping up to take on a NENA role, being North Clare's turn to run the Association. These are big jobs, and most of these ladies are doing another job, like coaching or umpiring, so if you can help them out or take on another small job it would be much appreciated.

There is a pretty good feeling around the Club, Diesy has the senior coaches running, we have a stronger A grade side, a very solid B grade, a top C grade, all meaning we have great strength filtering down throughout the grades. To say the least, I'm a bit excited to see the results. Not forgetting the 15U Premiers from last year, who retain half of those girls & get the other half coming up from the runner up grand finalists from J1, who will be coached this year by Chelsea Panoho & Rachel Pearce. With that experience & talent, those girls will be in great hands. But it doesn't stop there, our juniors are looking the part as well. With Junior co-ordinator Delvene Mathie at the helm, the coaches and the kids run like a well oiled machine.

So keep up the enthusiasm, the fitness, and the Club spirit but most of all enjoy your netball.

Cheers

Jodie

# NEW ROOSTER!



**Chloe Rose**  
**A new little netballer!**  
**Congratulations to Patrick and**  
**Amanda**

**And quietly cooking away...**  
**Ben, Step, Maddi and Ella have a bundle**  
**arriving later this year – Finals time!!!**

## In the Off Season

**How could we miss this bunch ! Ex coaches and players, mums and dads, and our U14 Coach!**





# Our little Roosters are Growing Up!

Lee Nickolai managed to snap some of our little chickens all spruced up for the CHS Prom. NAWW!!!



Lachie & Tahlia Gill



Jacob Nickolai



Emma & Megan Peters



Georgia Calaby with Lochy Reichelt



Ben Cross with Julia McInnes



Angus Edmondson with Georgina



Sarah Bramley



Josh Schumacher



Millie Heinjus



# A Nice Day for a run!

Leeroy had her camera out again – got some snaps of some of the volunteers and Northies at the Clare Run on 3/4/16. It Seems the Baums' had a lovely day out. Sam did an Excellent job!







# ROOSTERS 2016 MERCHANDISE

(SPORTSCENTRE DESIGNS)

ROOSTERS WINDCHEATER



**MENS SIZE 14+ :**  
**\$60.00**

**LADIES SIZE : \$60.00**

**KIDS SIZES 8 -12 : \$50**

**BABY SIZES 00-6 :**  
**\$45**

**Kids**

SIZE	00	0	2	4	6
HALF CHEST	30	32	34	36	39

**Ladies**

SIZE	4	6	8	10	12	14	16/XS
HALF CHEST	40	44	48	50	52	55	57

**Mens**

SIZE	16/XS	S	M	L	XL	XXL	2XL	4XL	5XL
HALF CHEST	57	59	61	63	65	67	69	71	73

ROOSTERS WARM UP GUERNSEY



**Kids**

SIZE	00	0	2	4	6
HALF CHEST	30	32	34	36	39

8, 10, 12, 14

(They will be the same size as your playing Guernsey)

**Mens**

SIZE	16/XS	S	M	L	XL	XXL	2XL	4XL	5XL
HALF CHEST	57	59	61	63	65	67	69	71	73

**ALL SIZES:**

**\$50 – short sleeve**

**\$55 – Long sleeve**

\*\*\*Please note: no women's sizes, but the ladies can order one\*\*\*

## ORDER FORM

FAMILY NAME: \_\_\_\_\_ CONTACT: \_\_\_\_\_

PHONE: \_\_\_\_\_ E-MAIL: \_\_\_\_\_

ITEM	SIZE	NAME ON BACK	QUANTITY	PRICE
				\$
				\$
				\$
				\$
				\$
				\$
				\$
				\$
			<b>TOTAL:</b>	\$

PLEASE NOTE: NO MERCHANDISE WILL BE GIVEN OUT UNTIL PAYMENT HAS BEEN MADE TO COLENE NOBLE